

# SNOWMEN



## WHAT TO EXPECT GUIDE

Welcome to Snowmen! This is a guide about what to expect when you come to see the show Snowmen by The Herd Theatre.

We believe theatre should be accessible to everyone. If you still have questions or there's anything we can do to help make our performances more accessible to you or others please let us know.

You can contact Christie at The Herd directly by emailing [christie@theherdtheatre.co.uk](mailto:christie@theherdtheatre.co.uk) or contact the theatre's box office if you'd rather telephone.

### CONTENTS

Key Information	2
Arriving at the venue	3
Introduction to the show	4
Toilets, Refreshments and Phones	5
The story	
Want to know more?	



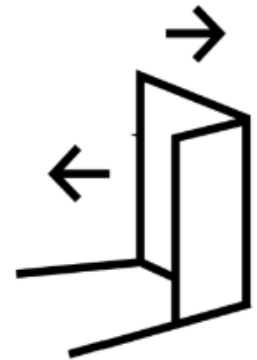
# SNOWMEN

## KEY INFORMATION



Timings

Snowmen is a 55 minute performance. The number of people in the audience will be up to 120.



Come and go

You are free to come and go as much as you need during the performance.



Lighting

There are gentle lighting changes in the show. There are no sudden flashes or changes of light. There is light on the audience seating all through the show.



Sound

The show is scored with original electronic music and sound that plays over speakers. The sound is set at a lower level to be comfortable for all.



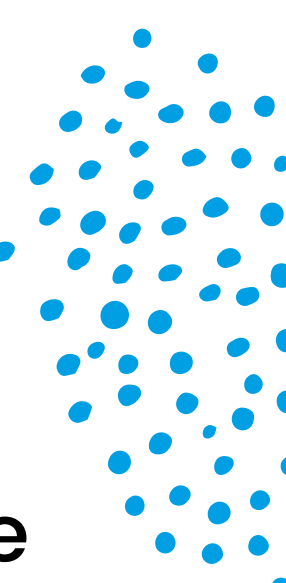
BSL

All spoken language is also signed using British Sign Language.



Breastfeeding

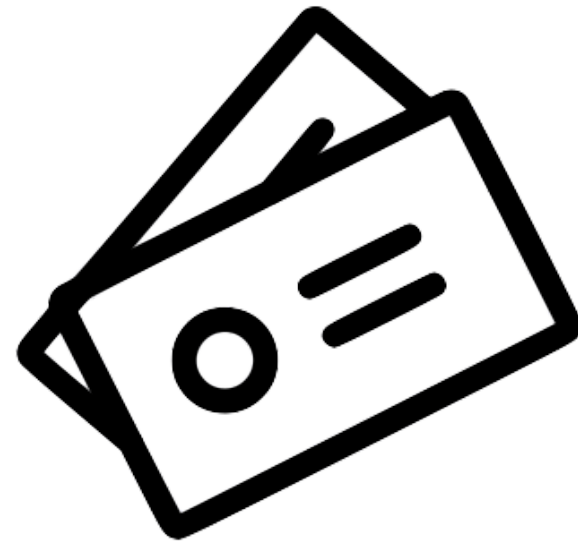
Breastfeeding is welcome in all venues on this tour.





## ARRIVING AT THE VENUE

You can book your tickets to the show at the theatre venue's website or by calling their box office team. You may be sent e-tickets in advance or you can collect them from the box office.



At each of the venues on this tour, you will be greeted by a member of the venue team who will check your ticket(s) as you approach the performance space.

You may have to wait a short while if the performance space is not yet open for audiences. This normally happens around 10 minutes before the show start.

If waiting is difficult for you, you can leave and come back once the doors are open.

### All Snowmen shows are relaxed

This means that we have a relaxed approach to noise and movement in the space, and you are free to enter and exit as you wish.

It also means sound level isn't too loud and lighting changes are gentle.

Please ask a member of the venue team if you have any specific requirements.

## Toilet and baby changing facilities

All venues have accessible toilets and baby-changing facilities.

Please ask the venue you are visiting for the locations.



## Food and Drink

All venues have a cafe where food, drink and snacks are available to buy.



All venues have free tap water to drink.

## Use of Phones

We ask you to kindly not use your phone during the performance unless you absolutely have too. Please do not take photographs or video during the show.

There will be an opportunity to have a photo with the penguin from the show afterwards!





# SNOWMEN

## INTRODUCTION TO THE SHOW

The theatre will open between 5-10 minutes before the show starts. The stage looks like this and will have 2 performers dressed in their snowmen costumes on the stage from the start.



The Snowmen may look at you and make gentle contact with a smile or wave, but they will not come close or talk directly to you.



Find a comfy place to sit in the theatre chairs.



# SNOWMEN

There are 3 characters in the show. They look like this:



This is Aldi  
Aldi is a Snowman



This is Tiger  
Tiger is a Snowman



This is Janitor



They all talk in a simple language without using too many words. They also sign in British Sign Language.

The snowmen look to the audience and share what is happening throughout. You can speak to them if you like but there is no expectation to do so.



You can make noise, laugh, comment whilst watching the show, even talk along if you like.

The full story of the show is on the next page - be warned it does contain spoilers!



# SNOWMEN

## THE STORY

Two snowmen live in a park. They come alive when no humans are about. One day the sun comes out and they start to melt. They need to find a cold home to live in.



A human arrives with 2 ice cold slushie drinks. The snowmen want the cold drinks so they try and sneak to get them.



The human is waiting for a friend to meet in the park. The friend doesn't arrive and they are disappointed and feel lonely.



# SNOWMEN

The Human is the janitor of an ice arena called Ice World. The Snowmen follow the janitor to work and discover the ice cold arena. This could be a perfect home.



With the Janitor out of sight, they explore the arena, discovering ice skating and befriend a plastic penguin skating aid.



They drink slushies and their bodies glow.





# SNOWMEN

Janitor comes back into the ice arena and the snowmen have to hide. \*please note this moment has the most sudden tone shift in the show. It comes after the bodies of the slushies grow.



They find a lost property box and decide to dress as humans. The Janitor finds them and thinks they are human.



The ice arena closes and they have to leave. They try and run away from the Janitor. He catches them so they reveal that they are in fact Snowmen, and will melt outside.





# SNOWMEN

The Janitor is amazed and wants to show the Snowmen his ice skating. They all dance together on the ice.



The Janitor invites them to live in the ice arena, out of sight of the other humans. The Snowmen are delighted!

## Audience Interaction

There are 2 moments in the show where the performers come close to the audience.

1. They pick up a fan and blow the cold air around the space and you can feel the gentle wind from the fan
2. When their bodies glow with slushies they play with a silver blanket that they bring into the audience and fly over the heads of the audience.



## What will happen after the show?

Once the performance has finished, the lighting will become brighter and you will exit the same way you entered the performance space.

There will be an opportunity to have a photo taken with the penguin from the show!



## WANT TO KNOW MORE?

You can find out about The Herd and what we do by going to our website

[www.theherdtheatre.co.uk](http://www.theherdtheatre.co.uk)

Or follow us on social media

@theherduk

Or get in touch at [hello@theherdtheatre.co.uk](mailto:hello@theherdtheatre.co.uk)